

[TopPage](#)>>[Search Result](#)>>7230C

Angular Contact Ball Bearings

Bearing No. : **NACHI 7230C**

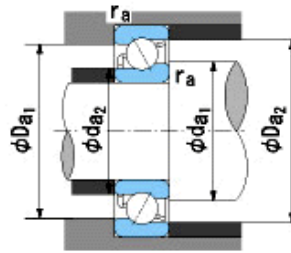
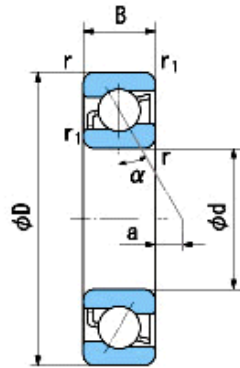
■ Bearing Type

■ Clearance

■ Tolerance Class

Dimensions

d = 150⁰_{-0.025}
 D = 270⁰_{-0.035}
 B = 45⁰_{-0.250}
 r = 3~5
 (Radial Direction)
 r = 3~8
 (Axial Direction)
 r1 = 1.1~2.5
 (Radial Direction)
 r1 = 1.1~4
 (Axial Direction)
 a = 1.5



Dimensions

da1(min) = 164
 da2(min) = 164
 Da1(max) = 256
 Da2(max) = 263
 ra(max) = 2.5
 ra1(max) = 1
 Mass = 11.0 kg

Basic Dynamic Load Rating Cr : **261,000** N
 Basic Static Load Rating Cor : **287,000** N
 Limiting Speed ;
 Grease Lubrication : **3,800** min⁻¹
 Oil Lubrication : **5,200** min⁻¹

	INNER RING	OUTER RING
O.D.Surface Runout with Side :		-
Axial Runout with Bore :	-	
Axial Runout with Raceway :	-	
Width Variation :	0.030	0.030
Radial Runout :	0.030	0.060